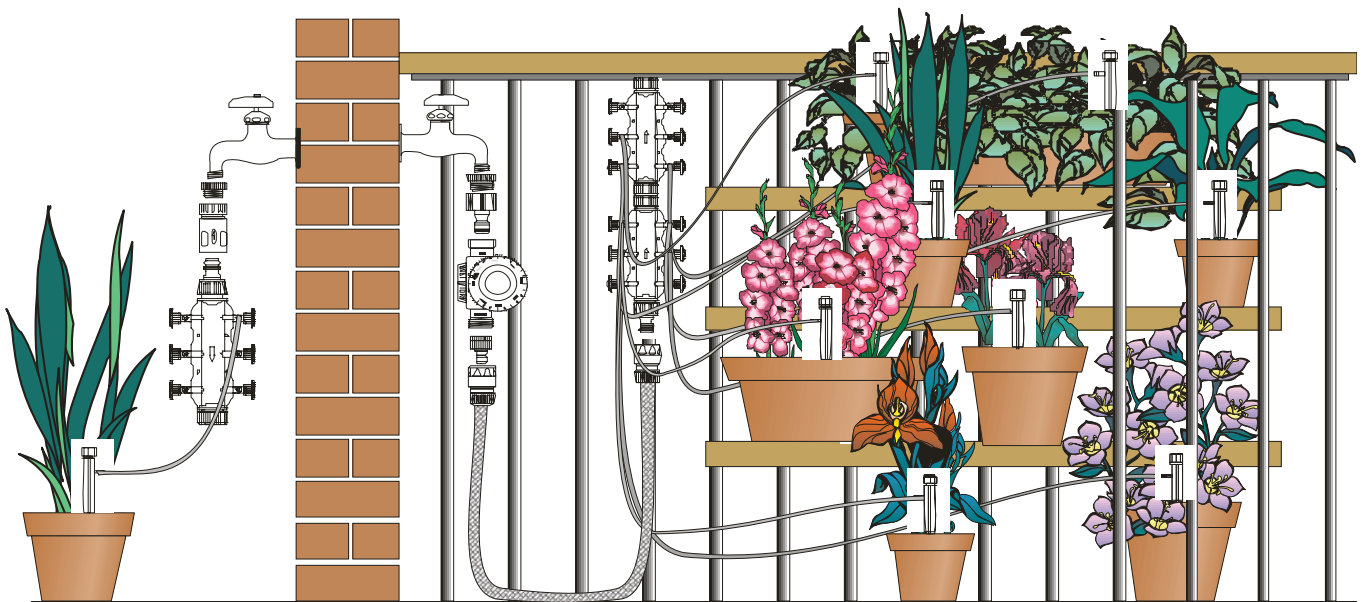
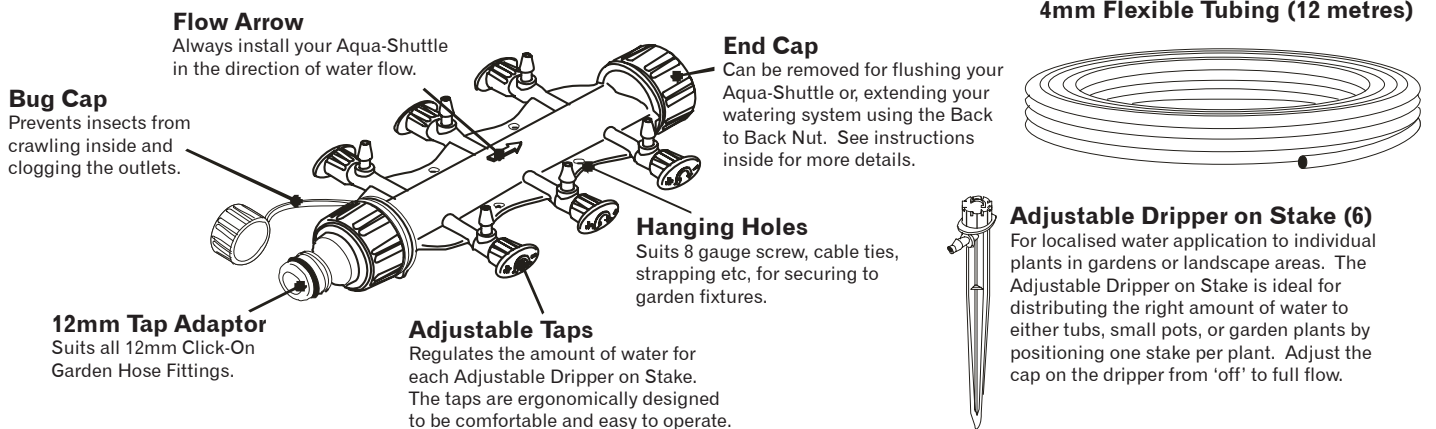


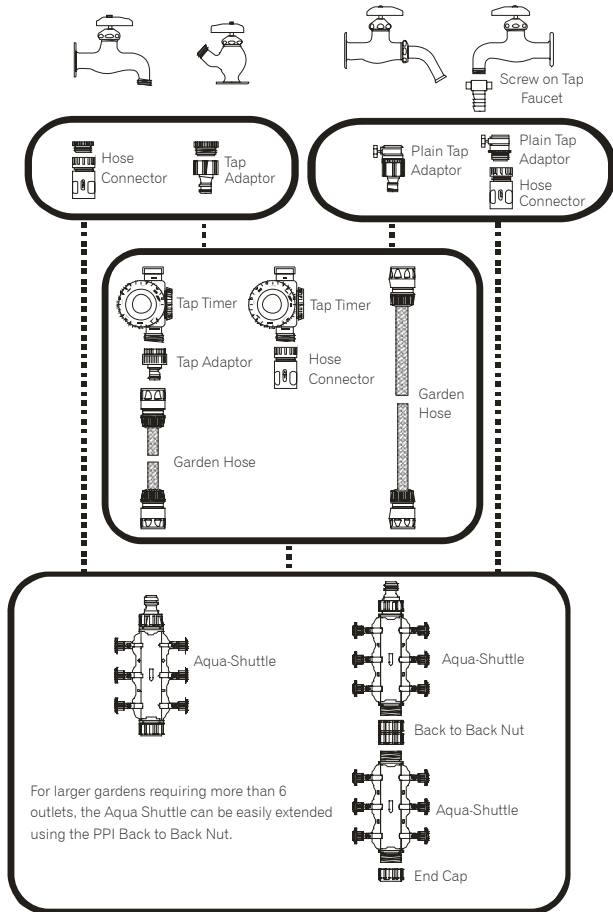
## Features and Benefits:

- The Aqua Shuttle has been designed as a multi-purpose watering product for use in small gardens, on verandahs, porches, balconies, pergolas and in hot houses.
- The Aqua Shuttle is a versatile and powerful watering distributor which enables you to water specific plants or clusters of plants.
- The Aqua Shuttle is compatible for use with drippers, jet sprays, misters, micro sprinklers and/or any of our micro sprays or jets.
- The Aqua Shuttle is fully adjustable for controlling the amount of water provided to the designated plants, by the adjustable taps. These can be adjusted to either control the watering to individual plants or be turned "off" for those plants that do not require watering everyday.
- Winner of the award for the "Most Innovative New Product" at the 1998 National Japan DIY Show".

## The PPI Aqua Shuttle

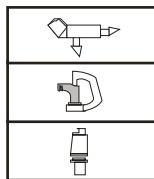


## Connecting the AquaShuttle



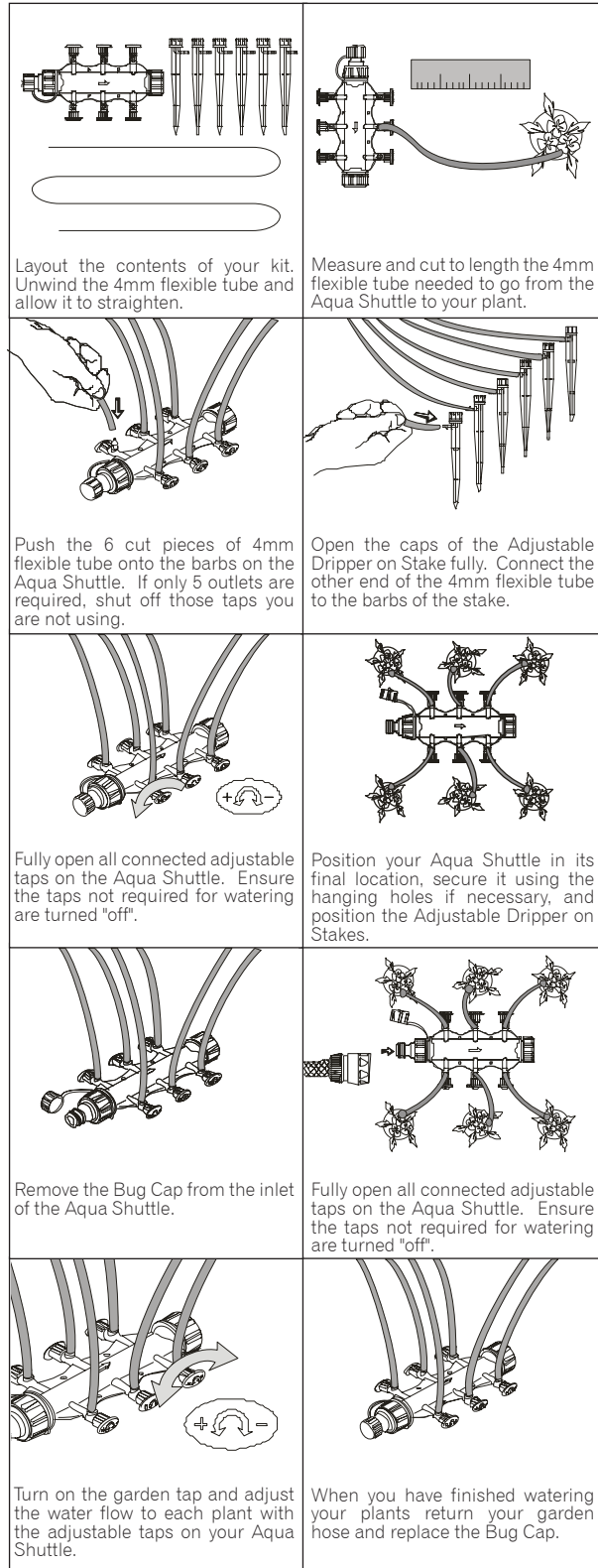
## Installation Tips

- If the flexitube is "blowing off" the barbs, you may have high water pressure in your area. To prevent this from happening use the taps at the Aqua Shuttle to regulate the flow in the system.
- Flush your Aqua Shuttle regularly. Make sure all the taps are "off", then remove the End Cap. Turn on the tap and allow the water to flush out the Aqua Shuttle.
- The Back to Back Nut allows you to extend your Aqua Shuttle watering system with ease.
- Although the Aqua Shuttle Kit comes complete with Adjustable Drippers on Stakes, you can customise your watering system by selecting from the different types of drippers, sprays and sprinklers.



## How to Use the Aqua Shuttle

We have an easy step by step guide explaining how to install and use your new Aqua Shuttle.



## Guarantee

This product comes with an unconditional guarantee against faulty workmanship and defective parts.